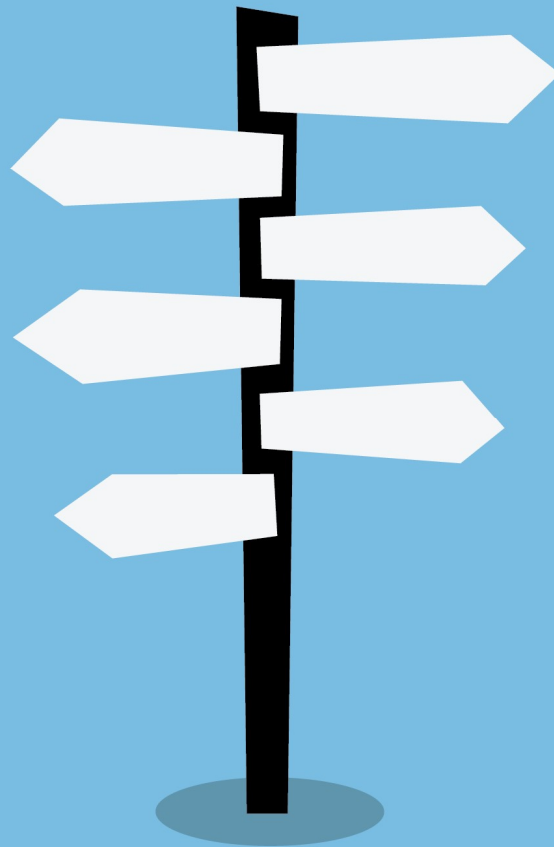




**Montgomery**  
Academy

*Which way now?*



*Options Booklet 2022*



# **Montgomery Academy**

## **Making informed choices**

Now that you are approaching option time, it is very important to make careful choices regarding the subjects you wish to study for GCSE. At Montgomery, we make a number of subjects compulsory to ensure that all students continue to study a broad and balanced curriculum, which provides excellent preparation for the future.

We also recognise that by now you may have certain subject strengths and interests. If you have clear ideas on a career, this may influence your choice of GCSEs. It is also worth remembering that if you wish to study a subject at A level, for most subjects it is better to have studied them at GCSE first.

You will receive plenty of personalised advice and guidance as you make your option choices and I hope that you find this booklet and the whole process both useful and supportive.

## **Options Events, Timescale and Deadlines**

Please note – due to the ongoing pandemic many of our events will be virtual and timings may be subject to change.

February 2021 – Year 9 cycle 1 report sent home

### **February/March – Virtual Options Evening videos available on school website**

10th February - Virtual Parents' Evening

21st February - 4th March – Individual Options Discussions

1st March - In-school options taster sessions

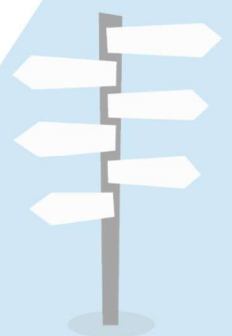
18th March 2021 – deadline for completing online google form

April–June Options and Timetable construction

June/July Confirmation of options for all students

**Please note that once the timetable is written, students may not change their options.**

September 2022 Key Stage 4 study begins!





# **Montgomery Academy**

## **Advice and guidance from Mrs Montgomery Senior Deputy Headteacher**

This booklet provides information about all the courses available for Key Stage 4 students at Montgomery Academy in September 2022. We have spent much time discussing and planning our curriculum offer because we recognise the importance of continuing educational opportunity and achievement. All students currently in Year 9 are required to stay in education or training until they are 18.

### **CHOICES 1–2–3**

All students will study GCSEs in English (Language and for most Literature), Mathematics and Science. For all other courses there will be an element of choice. The first choice concerns the English Baccalaureate subjects and the second and third sets of choices are to be selected from a list of both GCSE, BTEC and other vocational courses. All BTEC and Cambridge National courses are vocational qualifications, equivalent to one GCSE pass at grades 9–4. Vocational programmes enable students to complete modules throughout KS4 and are assessed on both coursework and examinations. In total, you will have three options to choose.

### **THE ENGLISH BACCALAUREATE**

The English Baccalaureate (EBacc) recognises where students have secured a GCSE grade 4 (or better) in English, Mathematics, two Sciences (including Computer Science), French and either Geography or History. This is a nationally recognised and sought after performance framework and we encourage and support students in working to achieve it.

Relevant subject pages are indicated with an **EB**

### **OPTIONS DISCUSSIONS**

All students will have a one-to-one discussion with either their Progress Tutor, a member of the Senior Leadership Team, a member of the pastoral staff or a Careers Advisor. This discussion will focus on each student's current progress levels, attitude to learning and career aspirations. We will discuss which subjects they are achieving well in, which subjects they enjoy and which subjects will most likely help with choice of career, if they currently have one in mind.

**It is vital that students and parents think carefully about option choices as there will be no chance to change once the timetable is written in June.**

It is hoped that the information in this booklet will give students and parents a clear picture of the different courses offered. We hope that decisions about these courses will be made in partnership between students, parents and school.

Please use the last page of this booklet to begin to collate your ideas together.

**Students - make sure you have it with you for your Options Discussion.**





## **SUBJECTS TAKEN BY ALL STUDENTS**

All students will follow courses leading to GCSEs in **Mathematics, English Language, English Literature\***, and **either double award Sciences or Separate Science**.

All students will also follow non-examined courses which cover PE, RE and PSHRE.

All students will follow the separate science curriculum in terms of their learning journey in Years 9 and 10 (this curriculum overlaps with the combined science curriculum but has greater depth). School examinations at the end of Year 10 will then guide decisions on whether students will be entered for the separate science pathway or the combined science program in Year 11. This gives all students the opportunity to study the separate sciences, with their effort and progress dictating which program of study is best for them as they head towards the linear exams at the end of Year 11.

### **OPTION BLOCK 1**

In the first option block, students must choose **ONE** GCSE course. The choices are:-

- Computer Science
- Geography
- History
- French

### **OPTION BLOCK 2 and 3**

There are a mixture of GCSE and vocational (BTEC and Cambridge National) courses available in blocks 2 and 3.

In summary, you must choose **one** course from Option Block 1, **one** from Option Block 2 and **one** from Option Block 3. You will also be asked to choose a reserve choice in each block.

This is necessary in case too few or too many pupils select an option.

The options form on the next page is for illustration purposes only – you will submit your choices online.

\*a very small number of SEND students do not complete English Literature



# HOW TO MAKE OPTION DECISIONS

## YEAR 9 OPTIONS FORM 2022



NAME : .....

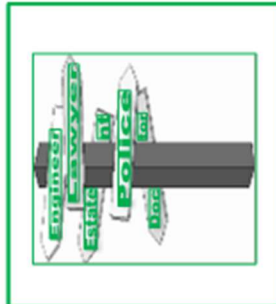
TUTOR GROUP: .....

I have discussed these options with my child and am happy with the choices they have made.

PARENTAL SIGNATURE: .....

For each Option please indicate your first choice, X, and reserve choice, Res.

OPTION 1	X / Res	OPTION 2	X / Res	OPTION 3	X / Res
Computer Science (GCSE)		Art and Design (GCSE)		Art and Design (GCSE)	
Geography (GCSE)		Art specialising in Photography (GCSE)		Child Development* (C N Cert)	
History (GCSE)		Child Development* (CN Cert)		D & T Food Preparation and Nutrition (GCSE)	
French (GCSE)		D & T Food Preparation and Nutrition (GCSE)		D & T Resistant Materials (GCSE)	
		D & T Graphic Products (GCSE)		Drama (GCSE)	
		D & T Resistant Materials (GCSE)		Enterprise (Business Studies) (BTEC)	
		Drama (GCSE)		French (GCSE)	
		Enterprise (Business Studies) (BTEC)		Geography (GCSE)	
		Geography (GCSE)		History (GCSE)	
		History (GCSE)		Music (BTEC or GCSE)	
		Media Studies (GCSE)		Physical Education (GCSE) /Sport (BTEC)	
		Physical Education (GCSE)/Sport (BTEC)		Religious Studies (GCSE)	
		Travel and Tourism (BTEC)		Travel and Tourism (BTEC)	



Please note the following:

**You may not choose D & T Graphic Products and D & T Resistant Materials**

**You may not choose GCSE PE and Cambridge National Certificate in Sports Studies**

**You must have access to a child currently under 3 to observe in order to choose Child Development as an option.**

**In order to access the Ebacc you must choose either Geography or History or both and a Modern Foreign Language.**

GCSE - General Certificate of Secondary Education

CN - Cambridge National Certificate

BTEC - Business and Technology Education Council

For illustration - to be submitted online

If you have any further queries please contact Mrs Montgomery in school or via email: c.montgomery@montgomery.fcacat.org.uk



Before making any choice of subject you should:

- find out as much relevant information as possible. Look on the internet, talk to people in the job you are interested in.
- ask for advice from teachers and the Careers Advisor
- find out about subjects you need for your future career—look at the web sites for colleges, universities, companies

You should choose subjects you:

- enjoy studying
- are likely to do well in
- may assist your future career

### **INDIVIDUAL ADVICE AND GUIDANCE DISCUSSIONS**

Please prepare for the upcoming advice and guidance discussion by completing the 'Your Ideas' page at the back of this booklet. **It is vital that you make the right choices for you** as, due to the complexity of the timetable, there will be no chance of changing options once the timetable has been written in June. **DO NOT CHOOSE A SUBJECT JUST BECAUSE YOUR FRIEND IS DOING IT!** Two years is a long time to study something you do not enjoy and you probably would not end up in the same group anyway.

Should you require further advice or information please contact myself, Mrs Coultas or Mr Palfrey at the following email address:

Senior Deputy Headteacher: [c.montgomery@montgomery.fcat.org.uk](mailto:c.montgomery@montgomery.fcat.org.uk)

Careers Leader: [l.coultas@montgomery.fcat.org.uk](mailto:l.coultas@montgomery.fcat.org.uk)

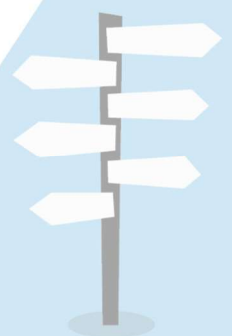
Careers Advisor: [p.palfrey@montgomery.fcat.org.uk](mailto:p.palfrey@montgomery.fcat.org.uk)

### **GUIDELINES FOR CHOICES**

Some combinations of choices are not permitted by the DfE as the programmes of study of the courses are too similar. The combinations not permitted are:-

GCSE D & T Graphics — GCSE D & T Resistant Materials

GCSE PE – Cambridge National Sport Studies





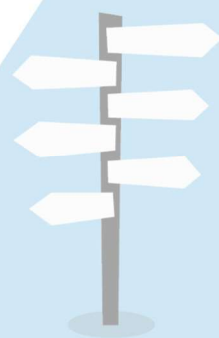
## **ALLOCATION OF PLACES**

Students are asked to indicate their options choices on the **online Options Form** a link to which will be sent to you and will be available on the school website. A paper version is included in this booklet to help you visualise the process. Please note that you are also asked to choose a reserve option in each of the three option blocks.

Every effort will then be made to give you your first choices, however, we cannot guarantee that every choice made will be granted. This will be subject to the availability of staffing. There are limits to the number of students in classes so if a course is over-subscribed you may have to consider the available alternatives. If a course is under-subscribed it cannot run. It is for these reasons that we ask you to make a reserve choice in each block.

Remember! Choose subjects you enjoy and do not be influenced by your friends' choices.

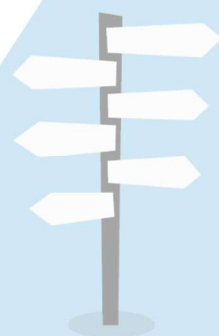
**Please complete the online Options Form by Friday 18th March 2022.**





**Montgomery Academy**

**National Curriculum Core Subjects**







## **What is GCSE English Language and Literature about?**

The AQA syllabus is followed for GCSE English Language and GCSE English Literature, fulfilling the statutory requirements for the National Curriculum. The attainment targets of speaking and listening, reading and writing are examined in detail. Students achieve two separate GCSEs, one for English Language and one for English Literature.

## **What will I learn?**

Students learn to read with insight and interest making appropriate reference to text, to distinguish between fact and opinion and evaluate how information is presented. Students will learn how to communicate clearly and accurately in both speech and writing for a wide range of purposes and audiences, and for different effects. Students will also learn to respond to Literature texts and develop skills in analysis, empathy and essay writing.

## **How will I learn?**

GCSE students learn by reading and discussing a wide range of literary and media texts from a broad spectrum of genres, cultures and historical periods and by writing in a variety of contexts.

## **How will I be assessed?**

The courses for GCSE English Language and GCSE English Literature are 100% exam based.

For English Language there will be one fiction paper (1 hour 45 minutes), which assesses reading of unseen 20<sup>th</sup> or 21<sup>st</sup> century prose fiction and writing of a narrative or descriptive task, and one non-fiction paper (1 hour 45 minutes), which assesses reading of an unseen 19<sup>th</sup> century non-fiction text and an unseen 20<sup>th</sup> or 21<sup>st</sup> century non-fiction text and the writing of a non-fiction text.

For English Literature students will be assessed through two examinations. Paper 1 (1 hour 45 minutes) assesses a Shakespeare play and a 19th Century Fiction Text. Paper 2 (2 hours 15 minutes) assesses a modern text, an anthology of poetry and unseen poetry.

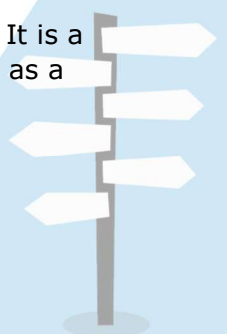
## **What homework will I have to do?**

Homework will be set weekly by individual teachers in addition to ongoing revision work. Tasks could include skills practice, research and reading exercises.

Students will need to read and re-read the Literature texts independently and learn quotations to use in the examinations.

## **Where will it take me?**

English as a subject leads to many careers and supports the study of many other subjects. It is a gateway qualification to college courses and students should aim for Grade 5, a good pass, as a minimum.





## What is GCSE Mathematics about?

The GCSE Mathematics examination is the means of assessing each student's achievement in mathematics during Key Stage 4. All students will follow a linear scheme of work and successful candidates will be awarded a grade from 1 to 9, where 9 is the highest. There will be two tiers of entry: Foundation (grades 1 to 5) and Higher (grades 4 to 9). Students will follow the White Rose scheme of work in Years 10 and 11. This is a continuation of the scheme followed in Years 7, 8 and 9 which encourages students to be confident mathematicians by developing their understanding of the subject.

## What will I learn?

By the end of the course candidates are expected to be able to:

- Recall mathematical facts and apply these facts in real life situations
- Present mathematical work, including graphs, tables and diagrams in a way which can be understood and interpreted by others
- Select the relevant mathematical skills to apply to a problem or situation
- Cope with mathematical calculations with or without a calculator;
- Use mathematical skills to solve problems
- Demonstrate high levels of conceptual understanding in mathematics

## What coursework will I need to do?

There is no coursework for GCSE Mathematics.

## How will I be assessed?

Students will take three 90-minute examinations at the end of Year 11, one of which will be without the use of a calculator.

## What homework will I have?

It is essential to complete homework in mathematics as it helps to consolidate classroom learning. Homework will be set and completed once a week and will usually consist of a number of revision tasks on an online platform.

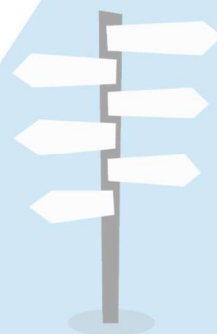
The Montgomery mathematics department has its own website, [www.montgomerymaths.co.uk](http://www.montgomerymaths.co.uk), which offers links to resources which will support students to learn independently.

## Any special requirements?

All students are expected to have a pen, pencil, ruler, pair of compasses, protractor, and a scientific calculator with them for every lesson.

## Where will it take me?

Mathematics is for everyone. It is a very important qualification for all jobs and the ability to tackle mathematical tasks is one which you will continue to use throughout your life. A level 4 is the minimum requirement to access most jobs, essential for entry into all reputable Further and Higher Education institutes, and is expected for apprenticeships.





## What is GCSE Science about?

This comprehensive course encourages students to develop their interest and enthusiasm for science and develop a critical approach to scientific evidence and methodology. It also enables students to acquire and apply skills, knowledge and understanding of how science works in our everyday lives.

## What will I learn?

You will learn how science works and its essential role in society. All students study key scientific principles across biology, physics and chemistry using AQA Trilogy specification 2016. Students will learn how to acquire scientific knowledge, understanding and practical investigative skills necessary for progression to further learning opportunities.

## Course Structure and Examinations

Within the new specification (first examinations 2018), students will either study the separate sciences, biology, chemistry and physics, leading to three GCSE qualifications (one in each area) or the combined science program which is worth two GCSE qualifications but still covers biology, chemistry and physics. All students at Montgomery will initially study the separate science pathway in Year 10. Their mock exam results at the end of Year 10 will then be used to decide which science pathway will enable them to make the best possible progress in Year 11. In both combined and separate science, practical skills are assessed through a series of required practicals which will then be tested within the linear exams in Year 11.

In terms of these exams, the combined science students will do six 1 hour 15 minute exams (2 x biology, 2 x chemistry and 2 x physics). The separate science students will do six 1 hour 45 minute papers (2 x biology, 2 x chemistry and 2 x physics) which covers more content.

The new specification also has an increased maths content with 10% of the marks in biology, 20% in chemistry and 30% in physics exams being attributed to mathematical application. **This means all students require a scientific calculator for the course and for examinations.**

Grades awarded will be on the 1-9 numerical levels as opposed to the traditional but now extinct GCSE letter grades.

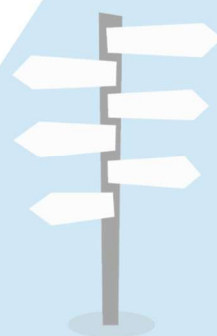
## Progression Routes e.g. Further Education

- A level sciences (Physics, Chemistry, Biology)
- Forensic science
- Medical science
- Engineering
- Health and social care

## Possible Careers

- Dentist\*
- Doctor\*
- Nurse
- Veterinary Science\* or Nurse
- Health and social care
- Education
- Pharmacy
- Physiotherapy
- Beauty Therapy
- Forensics
- Engineering

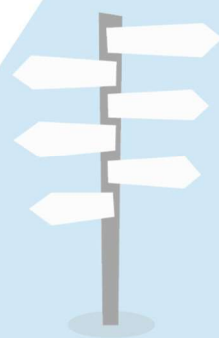
\* Note that further study in Biology and Chemistry may be needed for these careers.





**To be successful in this subject you need to:**

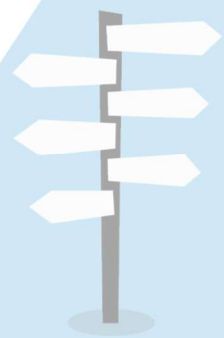
- Work hard and complete all classwork and homework
- Engage with Seneca learning to strengthen long-term recall
- Adopt an enquiring approach to problem solving
- Be able to work independently and collaboratively
- Be able to research scientific ideas effectively
- Ask and answer probing questions and think positively
- Apply knowledge to unfamiliar scenarios
- Adopt a resilient and determined mind-set
- Have your own scientific calculator as this is needed in both lessons and exams





**Montgomery Academy**

**Option Subjects**





# **GCSE Art and Design**

## **What is GCSE Art & Design?**

The art and design course operates in modules that cover a variety of media and techniques, to produce artwork in both two and three dimensions.

There are two units of work.

### **Unit 1—two modules**

Each module of work comprises of studies, investigations and research into a variety of artists and cultures. Work is then selected from each module to represent your 'Unit 1:Portfolio of Work'

### **Unit 2**

This unit comprises of a question paper set by AQA. Students have time to prepare, research and plan ideas in readiness for a 10 hour sustained, focused study. All work produced during this time represents the 'Unit 2:Externally Set Task'.

### **What will I learn?**

You will learn about design and techniques of painting, drawing and sculpture work from many artists and cultures which will be evident in your own work.

### **Progression Routes e.g. Further Education**

- Art & Design A Level
- BTEC Diploma in Art & Design, Graphics, Illustration,
- Photography, 3D Studies

### **Possible Careers**

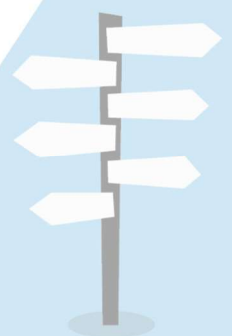
- Design based careers - Fashion, Product & Graphic Design
- Teaching
- Self employed artist/designer

### **To be successful in this subject you need to:**

- Enjoy practical work and be prepared to investigate and experiment with materials and techniques
- Have the ability to sustain effort in order to complete work to a high level of finish

### **Do NOT consider this subject if you:**

- Do not enjoy practical work and have limited appreciation of the world around you
- Are not committed to sustain time and effort to produce high quality coursework





## **GCSE Art specialising in Photography**

### **What is Photography about?**

The GCSE Photography course is a GCSE specialising in Photography. The course involves researching photographers and their techniques, taking photos and reflecting on your own work to produce creative and personal photographs which respond to themes and fulfil the assessment objectives. The course is great for creatives to develop their practise in Photography.

The coursework comprises of 3 units (60% coursework), Food Photography (Still Life), Weird and Wonderful (Portrait Photography) and Britishness (Landscape and Street Photography). We will conduct some shoots in school and around the local area, however there is a huge expectation to take photographs in your own time and on a regular basis. Your exam (40%) is a 4 month independent photography project based on themes set by the exam board (AQA).

### **Progression Routes e.g. Further Education**

- A Level Art & Photography and BTEC Level 3 Art And Design @ Blackpool 6<sup>th</sup> Form
- Level 2 & 3 courses @ Blackpool & Fylde such as Creative Arts, Graphic and Digital Design, Art and Design and Photography A level Media

### **Possible Careers - With further training**

- Photographer / Graphic Designer / Game Design / Marketing / Theatre / Galleries

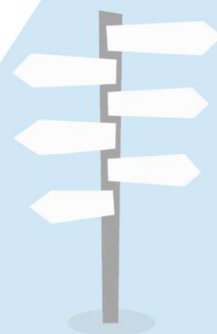
### **To be successful in this subject you need to:**

- Have access to a camera for your personal use
- Be organised, creative and imaginative
- Use interests / opportunities outside of school to take photographs
- Take risks with your creativity
- Be interested and enthusiastic in photography and art
- Be committed to take pictures outside of school on a regular basis
- Be highly motivated and driven to take photos in your own time
- Use a range of influences to create a personal response

### **Do NOT consider this subject if you:**

- Dislike theory based activities (written work)-this course is not just about taking photographs and using Photoshop or Instagram!
- Dislike homework photography activities- Completing these will help you succeed
- Students must be prepared to photograph each other and photograph people and places in public for 2 of your coursework units

For some ideas of what students have been doing this year check out the Instagram page @PhotosFromMA





## **GCSE Computer Science**

**EB**

### **What is GCSE Computer Science about?**

Computer Science is a rapidly growing subject and is seen as an underpinning subject across science and engineering and indeed many other subjects. It involves the study of computers, including how they work and looking at the growth in the mobile device market.

### **What will I learn?**

GCSE courses based on this specification are designed to enable students to:

- develop their understanding of current and emerging technologies and how they work
- acquire and apply knowledge and an understanding of the use of algorithms in computer programs to solve problems using programming
- use their knowledge and understanding of computer technology to become independent and discerning users of ICT, and be able to make informed decisions about its use, and aware of the implications of different technologies
- acquire and apply creative and technical skills, knowledge and understanding of ICT
- develop computer programs to solve problems
- develop the skills to work collaboratively
- evaluate the effectiveness of computer programs/solutions and the impact of and issues related to the use of computer technology in society

### **Progression Routes e.g. Further Education**

- A level in Computing
- A Level in ICT
- A Level in Electronics

### **Possible Careers**

- Software Engineering
- Computer Science
- Robotics
- Game Design
- Artificial Intelligence

### **To be successful in this subject you need to:**

Enjoy computing! A large part is about programming and the study of how computers are made and work. In years eight and nine we have been looking at computer programming with the text based language Python. This will continue over the GCSE course, including completing a programming project.

### **Do NOT consider this subject if you:**

- Are not prepared to complete the necessary written work. The theory behind the subject will be tested in an end of unit exam which equates to 50% of the final mark.
- A previous misconception is that the subject is about creating/playing games.







# **GCSE Drama and Theatre Studies**

## **What is GCSE Drama?**

GCSE Drama offers an exciting, inspiring and practical course whilst providing learners with the key skills they will need to succeed academically, professionally and personally. Throughout the course students will be taken on numerous trips to theatres and live shows; and have access to outstanding online resources and visiting theatre companies. GCSE Drama provides constant opportunities to view, create, perform and respond to various styles of live performance. Learners will be given opportunities to participate in and interpret their own and others' pieces of theatre by working collaboratively to generate, develop and communicate ideas.

## **What will I learn?**

The course is separated into three components:

1. Devising Theatre
2. Performance from a Text
3. Interpreting Theatre

In the **Devising Theatre** component learners will investigate a practitioner and work collaboratively to develop ideas to communicate meaning whilst applying techniques to produce a piece of theatre and three written essays. In **Performance from a Text** learners will perform a section of a published script to a visiting examiner. Finally, **Interpreting Theatre** is the written exam component and will be completed at the end of the course.

## **Progression Routes e.g. Further Education**

- BTEC Performing Arts or Musical Theatre
- A Level Drama & Theatre Studies
- University or Drama School/College

## **Possible Careers**

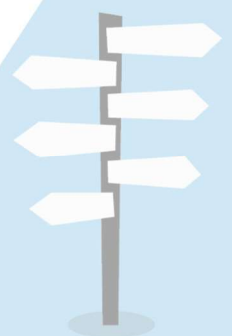
- Performer - Actor, Singer, Dancer, Entertainer
- Presenter - Radio, Television
- Designer - Costume, Make-Up, Set Designer
- Stage Crew - Stage Manager or Lights, Sound Technician
- Therapist - Speech, Drama Therapy
- Teaching - The Arts, English, Primary Education
- Choreographer, Media, Human Resources

## **To be successful in this subject you need to:**

- Be willing to focus during group work with all peers; not just your friends.
- Be willing to stand up and perform in front of an audience; this will happen at least once a week in lesson
- Ensure you take the written work very seriously
- Commit to attending after-school rehearsals when needed
- Ensure you take responsibility for an aspect of each performance you are creating; other students need to be able to rely on you
- Prepare and revise for a written exam paper at the end of the course

## **Do NOT consider this subject if you:**

- Do not work effectively in groups or with peers
- Are not prepared to give up some of your evenings occasionally to go to the theatre or rehearse
- DO NOT LIKE PERFORMING!





## **GCSE Food Preparation and Nutrition**

### **What is GCSE Food Preparation and Nutrition about?**

Food Preparation and Nutrition is a course which focuses on practical cooking skills as well as strong theoretical knowledge to ensure students develop a thorough understanding of nutrition, food provenance and the working characteristics of food materials.

### **What will I learn?**

The course follows the following five core topics:

- 1. Food, nutrition and health** – macro nutrients, micro nutrients, nutritional needs and health.
- 2. Food science** – cooking of food, heat transfer and the functional and chemical properties of food.
- 3. Food safety** – food spoilage, contamination and the principles of food safety.
- 4. Food choice** – factors affecting food choice, British and international cuisines, sensory evaluation, food labelling and marketing
- 5. Food provenance** – environmental impact and sustainability of food, food processing and production.

### **Course Structure**

**NON- EXAM ASSESSMENT (NEA): Task 1:** Food investigation and written report

**NON- EXAM ASSESSMENT (NEA): Task 2** Food preparation assessment and written coursework

**WRITTEN THEORY EXAM: Food Preparation and Nutrition:** extended mark essay questions.

### **Progression Routes and Possible Careers**

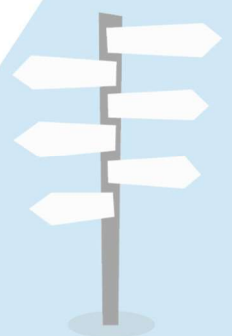
Food preparation and nutrition can lead onto a range of courses at college, including catering and bakery, as well as sports and nutrition. Further study and beyond can lead to a vast range of interesting career options. This course could lead you into roles such as a chef, food product developer, buyer (who travels the world sourcing new food products for manufacturers), food safety inspectors, nutritionists, dieticians, quality managers, teacher, food engineer, food scientist, food technologist, food photographer, food stylist, home economist and hotel and restaurant manager.

### **To be successful in this subject you need to:**

- Have good attendance
- Be well organised, bringing ingredients for practical lessons
- Be prepared, dedicated and motivated to complete both practical and written work
- Keep to deadlines
- Have a passion for learning about food in practice and in theory

### **Do NOT consider this subject if you:**

- Dislike research and analysis





## **GCSE Design and Technology: Graphic Products**

In line with the ever changing world of design, this fantastic new GCSE encompasses all material areas, rather than focusing solely on Graphics. Pupils will learn about all material areas (wood, metal, plastic electronics etc.), to be able to use them together – as is the norm in industry.

**Final GCSE: Non Examined Assessment 50%, Examination 50%**

### **What will you learn?**

You will learn about the world of materials and design including plastics, woods, metals, smart and modern materials. You will develop your awareness of the design industry and learn much more about the role of the designer in product development. Assuming the role of the designer you will continue to extend your problem-solving skills and express your ideas creatively and artistically whilst expanding your portfolio of practical techniques. Through product analysis you will be able to broaden your design appreciation of trends and materials. You will also have the opportunity to enhance transferable skills such as time management and analytical thinking. You will be encouraged to use the school's laser cutter and Photoshop throughout the course.

### **Who is the course aimed at?**

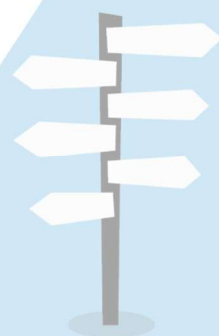
Are you passionate about Designing and Making? Do you enjoy problem solving? Do you enjoy being creative whilst learning new techniques and skills? Do you want to try out your own ideas and perhaps follow a path which leads into Design or Engineering? Then this course is an ideal choice for GCSE. It is important to note that this is a rigorous, academic GCSE, with written communication, research and problem-solving featuring in this course.

### **How is the course structured?**

The first element of the course will be focused on mini practical projects, learning how to use 2D design, google sketch up and Photoshop appropriately, whilst covering the theory content of the course one lesson per week. Following on from this you will complete a design and make assignment in class (NEA – Non-Examined Assessment), selected from a set of Exam Board approved tasks. The NEA will be graphics based.

### **Where does the course lead?**

The diversity of this course means it can lead towards a career in Architecture, Marketing, Engineering, Interior Design, Materials Science, Medical Textiles, Fashion Communication, Graphic Design and Product design to name but a few.





## **GCSE Design Technology: Resistant Materials**

In line with the ever changing world of design, this fantastic new GCSE encompasses all material areas, rather than focusing solely on Resistant Materials. Pupils will learn about all material areas (mainly wood with some focus on metal, plastic electronics etc), to be able to use them together – as is the norm in industry.

**Final GCSE: Non Examined Assessment 50%, Examination 50%**

### **What will you learn?**

You will learn about the world of materials and design; including woods, plastics, metals, smart and modern materials. You will develop your awareness of the design industry and learn more about the role of a designer in product development.

Assuming the role of the designer you will extend your problem solving skills and express your ideas creatively whilst developing practical skills. Through product analysis you will be able to broaden your design appreciation of trends and materials; you will also have the opportunity to enhance transferable skills such as time management and analytical thinking. You will be encouraged to use a wide range of workshop tools and equipment, the Laser Cutter and IT throughout the course.

### **Who is the course aimed at?**

Are you passionate about Designing and Making? Do you enjoy problem solving? Do you enjoy being creative whilst learning new techniques and skills? Do you want to try out your own ideas and perhaps follow a path which leads into Design or Engineering? Then this course is an ideal choice for GCSE. It is important to note that this is a rigorous, academic GCSE, with written communication, research and problem solving featuring in this course.

### **How is the course structured?**

During year 10 you will develop your practical skills in lessons in all material areas, whilst covering the theory content of the course one lesson per week. Following on from this you will complete the design and make coursework in class, selected from a set of Exam Board approved tasks. For the coursework you will specialize in one material area e.g. wood.

### **Where does the course lead?**

The diversity of this course means it can lead towards a career in Architecture, Marketing, Engineering, Interior Design, Materials Science, Medical Textiles, Fashion Communication, Graphic Design and Product design to name but a few.





## What is GCSE French about?

Languages are part of the cultural richness of our society. Learning languages contributes to mutual understanding, a sense of global citizenship and personal fulfilment. Students learn to appreciate different countries, cultures, communities and people. The ability to understand and communicate in another language is a lifelong skill for education and employment. A GCSE in French is highly valued and sought after by employers not only for its linguistic skills but also for the communication and problem-solving skills you will develop when studying it at GCSE.

## What is the course structure?

The course is made up of 3 themes of 11 topics. The following are some of the topics you will be studying:

- Healthy lifestyles
- Work and education
- Tourism
- Media and culture
- The environment and the local area
- Young people in society

To complete the course successfully you will be required to sit 4 exams at the end of Year 11 on the 4 skills (Listening, speaking, reading and writing).

## What will I learn?

Linguistic skills and confidence are the keys to becoming successful communicators. When learning another language, students build on their literacy skills in English and improve their ability to communicate their thoughts and ideas. Learning another language involves learning about another culture. This stimulates students' curiosity and develops enquiring minds. Students are encouraged to reflect on their own culture and compare it with that of other countries. Students are required to work independently, as well as in pairs and groups, constantly practising their spoken and written language skills, evaluating their progress and the effectiveness of their approaches.

Research suggests that people who learn another language develop their brain capacity and become more able in processing information faster. This means learning another language makes you smarter in other disciplines, too!

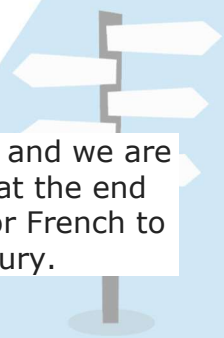
## Progression Routes e.g. Further Education

- AS, A and degree level
- Business & Languages
- Law & Languages
- Marketing
- Journalism
- Politics
- Economics and Languages
- Travel and Tourism and Languages

## Possible Careers

- Teacher
- Interpreter
- Translator
- Recruitment Consultant
- Journalist
- Market Researcher

We offer French to GCSE to appeal to our students' needs, strengths and interests and we are proud of the opportunities this gives our students and the outcomes they achieve at the end of the course. The Modern Languages team strongly encourages students to opt for French to be best equipped for the demands of the world of study and work in the 21st Century.





## What is GCSE Geography about?

Geography helps you to make sense of the world around you. The course will give you the chance to get to grips with some of the big global questions and understand the social, economic and physical forces and processes which shape and change our world. So many of the world's current problems boil down to geography, and we need the geographers of the future to help us understand them. There has never been a better time to study this subject, so make the choice to go places by taking Geography at GCSE.

## What will I learn?

The **physical** topics studied include:

- Natural Hazards - including earthquakes, hurricanes and climate change;
- Physical Landscapes - studying rivers and coasts;
- Living World - focusing on rainforests and hot deserts.

The **human** topics studied include:

- Urban Issues, looking at challenges faced in cities both in the UK and in LIC's;
- The Economic World - analysing the development gap between countries and solutions to it;
- Resource Management - focusing on demand for energy and sustainable solutions.

## What coursework do I need to do?

There is no coursework for this subject, but you will take part in 2 fieldwork visits. One visit will be human and another physical geography based. The methods and findings will be assessed in exam 3 at the end of Year 11.

## How will I be assessed?

You will have regular end of unit tests based on the content taught throughout years 10 and 11. The GCSE has **three** exams: 1) physical geography (35%); 2) human geography (35%); and 3) geographical skills (30%)

## What homework will I have to do?

You will be expected to complete regular **Seneca Learning** assignments throughout Years 10 and 11 to consolidate classroom learning.

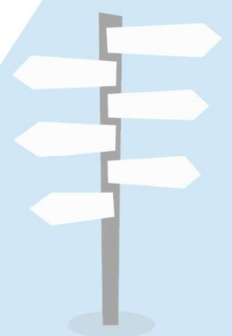
## To be successful in this subject you will need to:

Be interested and enthusiastic about Geography, be able to remember key information about a range of case studies, be able to justify your own opinions, and, **most importantly**, be willing to work hard.

## Where will it take me?

Geography is a highly regarded subject at college and university levels. The analysis and enquiry skills learnt in Geography are transferrable to all subjects and offers a sound base for future study. A few of the possible careers leading from Geography are:

- Town Planner
- Cartography
- Weather Reporter
- Surveying
- Volcanologist
- Environmentalist
- Teacher





## What is GCSE History about?

The course focuses on major modern world and European events and early British history. The topics to be studied include Germany 1890-45 where students gain a detailed insight into how Germany wanted to be a world power all the way through to the rise of Hitler and the Nazis.

Further topics include WW1 and Britain's experience on the Western Front. Students also study Elizabethan England and the development of medicine throughout history from medieval to modern times.

## What will I learn?

You will learn about how and why key events in the modern world have continued to shape events and how decisions made in the past shaped the world that we live in today. A study of Elizabethan society will help show you how values in society were shaped by the extremes in wealth and poverty and how Britain firmly established itself as a powerful nation. Furthermore, the study of medicine will show you how early beliefs in medical care led to the development of modern medical knowledge.

You will be assessed regularly using GCSE-style questions to help demonstrate your progress in history. At the end of the course there are two GCSE examination papers that you must take in order to gain the qualification. There is no Controlled Assessment as part of GCSE History.

## Progression Routes e.g. Further Education

- Progression to AS and A Level
- Degree in History and History related degrees

## Possible Careers

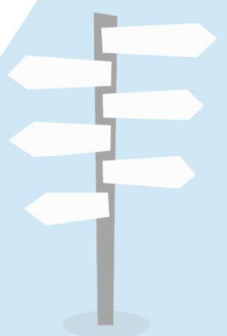
- Teaching
- Archaeology
- Law
- Local Government
- Library/Archive work
- Journalism
- Public Services
- Armed Forces

## To be successful in this subject you need to be:

- Able and keen to express your opinions
- Interested in current affairs
- Prepared to write extended answers and analyse a number of different sources.
- Open minded and willing to hear opinions that you may not agree with.

## Do not consider this subject if you:

- Struggle to form opinions
- Are not willing to work hard





## **GCSE Media Studies**

GCSE Media Studies gives students the chance to develop a critical understanding of the role of the media in daily life. It encourages an understanding of how to use key media concepts to analyse media products and the opportunity for hands-on practical work.

### **What will I learn?**

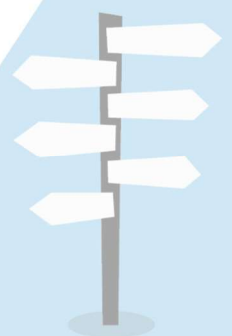
- To combine practical and theoretical knowledge – particularly the value of pre-production work and production skills
- A valuable insight into the way the media works
- The opportunity to be creative in areas that interest you like news, TV and music, for example by producing your own news reports, web designs or recordings
- To analyse and understand things that you might otherwise have taken for granted, such as the packaging on DVDs or how the opening minutes of a film, radio show or game are designed to grab audience attention
- Students develop appreciation and critical understanding of the media and its role in their daily lives
- Critical thinking and decision-making skills pre-production and planning skills like storyboarding, scripting, flat plans, news selection, mock-ups and sketching
- Production skills like photography, filming, recording, editing, and desktop publishing
- An understanding of new technologies
- Evaluation skills.

### **To be successful in this subject you will need to:**

- Have an analytical and inquiring mind
- Be able to combine writing, creative and production skills
- Be able to work both on your own and as part of a team

### **Assessment**

The assessment will be 30% coursework and a examination worth 70% of the final mark.







## **GCSE Music**

### **What is GCSE Music about?**

The course is designed to cover all aspects of music and gives students the opportunity to perform, compose and listen to music of all types.

### **What will I learn?**

You will learn how to compose your own music, how to improve your performing techniques and you will become familiar with different types and styles of music. The four areas of study are Western Classical Tradition 1650-1910, Popular Music, Traditional Music and Western Classical Tradition since 1910.

### **How will I learn?**

You will learn by using the electronic keyboards and other instruments, by listening to and studying a wide variety of music.

### **How will the course be assessed?**

You need to compose two pieces of music, one a composition to a brief and the other a free composition. This is worth 30% of the final mark. You also have to rehearse then perform a solo piece on your chosen instrument and an ensemble piece. This is also worth 30%. There is also a written listening examination worth 40% of the total marks.

### **Progression Routes e.g. Further Education**

- A Level Music
- Music Technology
- Performing Arts courses

### **Possible Careers**

- Professional performing or composing
- Careers in the music business e.g. recording, TV, radio, music management

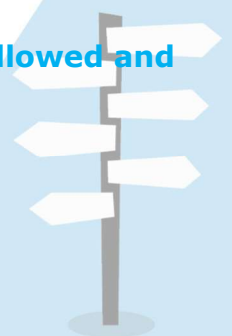
### **To be successful in this subject you need to:**

- Be able to play an instrument or sing well
- Be determined to work hard both during lessons and at home on coursework (composition) and rehearsing pieces for performance examination (on an instrument or singing)
- Meet all deadlines for coursework and recording performances

### **Do NOT consider this subject if you:**

- Are unable to read basic music notation
- Are not able to sing or play your instrument in front of the class

**The school will decide whether the GCSE Music or BTEC Music course is followed and this will be dependent on interest and numbers.**





## **GCSE Physical Education**

### **What is GCSE Physical Education about?**

GCSE Physical Education provides students with the knowledge and understanding of how to live a healthy and active lifestyle, enabling them to make informed choices about their own physical development. Students will learn how to analyse and evaluate performance and suggest effective plans for improvements. Students will study a range of sporting activities focusing on the skills appropriate to each, progressive drills and also the tactical strategies involved to increase performance.

### **What will I learn?**

- Anatomy and physiology
- Movement analysis
- Physical training
- Use of data
- Sports psychology
- Socio-cultural influences
- Health, fitness and wellbeing

### **How will I be assessed?**

60% of the course is theory and will be assessed in two examinations. The remaining 40% will be assessed practically both individually and in a team.

### **What homework will I have?**

Homework will be set fortnightly consisting of tasks relating to the theoretical aspect of the course.

### **Any special requirements?**

Students will take forward 3 sporting activities consisting of 2 team sports and 1 individual or 2 individual and 1 team sport, which will count towards their overall GCSE PE grade. Students will also complete coursework which requires them to analyse and evaluate their performance to bring about improvement in one activity. Therefore, it is imperative students are at a minimum representing a school team. As the GCSE PE course relies heavily on biology aspects of the course along with mathematical equations and continuous prose, consideration of English, maths and science sets will be taken into account.

### **Progression routes and possible careers**

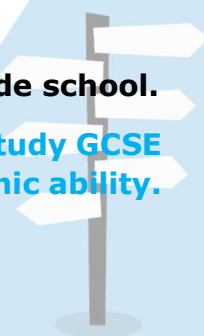
GCSE PE is particularly for those who wish to continue their studies in PE and sport in further education including A level and BTEC Sport courses.

Professions available to those interested in GCSE PE:

- Teacher
- Sports Development
- Sports Coaching
- Sports Management
- Physiotherapy & Sports Injury
- Sports Dietician
- Sports Psychologist

**You must already be actively involved in a sporting activity within or outside school.**

**The PE department will ultimately have the final decision on whether you study GCSE PE or Cambridge National Sport Studies based on your practical and academic ability.**





## **GCSE Religious Studies**

### **What is GCSE Religious Studies (RS) about?**

GCSE RS covers a range of the major world religions, six contemporary ethical themes and two textual studies, ensuring the students have a diverse choice of intriguing subjects to explore. Students will be challenged with questions about belief, values, meaning, purpose and truth, enabling them to develop their own attitudes towards religious issues. Students will also gain an appreciation of how religion, philosophy and ethics form the basis of our culture. They will develop analytical and critical thinking skills, the ability to work with abstract ideas, leadership and research skills. All these skills will help prepare them for further study.

### **What will I learn and how is it assessed?**

**Component 1:** Beliefs, teachings and practices of **two religions** from:

- Buddhism
- Christianity
- Catholic Christianity
- Hinduism
- Islam
- Judaism

This will be assessed by a **written exam (1hr 45mins)** worth **50%** of the GCSE

**Component 2:** **Four** religious, philosophical and ethical studies themes from the list below:

- Theme A: Relationships and families.
- Theme B: Religion and life.
- Theme C: The existence of God and revelation.
- Theme D: Religion, peace and conflict.
- Theme E: Religion, crime and punishment.
- Theme F: Religion, human rights and social justice.

This will be assessed by a **written exam (1hr 45mins)** worth **50%** of the GCSE

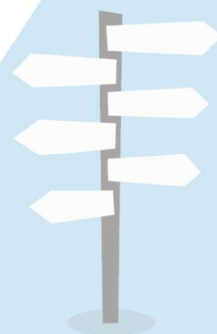
### **To be successful in this subject you will need to:**

Be interested, open-minded and enthusiastic about learning about other religions and religious viewpoints and apply those to real-life scenarios in a range of themes. You must be able to write in depth, and, **most importantly**, be willing to work hard.

### **Where will it take me?**

The analysis and enquiry skills learnt in RS are transferrable to all subjects and offer a sound base for future study. A few of the possible careers leading from RS are:

- Charity Coordinator
- Child & Youth Worker
- Clergy person
- Diplomat
- International Aid Worker
- Lawyer
- Mediator
- Social Worker
- Teacher





# Montgomery Academy

## **BTEC Tech Awards and Cambridge Nationals Vocational Courses**

### **What are BTECs and Cambridge Nationals?**

BTEC Tech Awards and CN Certificates are practical and/or work-related courses. They give you the skills and knowledge you need to kick-start your career and are a nationally recognised qualification. They are Level 2 qualifications equivalent to 1 GCSE at Grade 9–4.

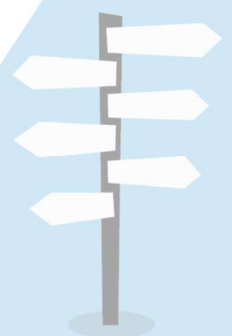
BTEC Tech Awards and CN Certificates are valued by employers and offer students a clear route into college education or into employment.

In 2022 we are offering BTEC Tech Awards in the following subjects:

- Enterprise
- Music
- Travel and Tourism

and Cambridge National Vocational Courses in:

- Child Development
- Sports Studies





## **BTEC Tech Award in Enterprise**

### **The enterprise sector**

All businesses need enterprising employees to drive their organisations forward, to have ideas and initiatives to instigate growth, and ensure that businesses survive in this fast-changing world. Enterprise is a key government focus and is set to form an important part of the UK's global economic status, both now and in the future. Enterprise skills provide a fantastic progression pathway into several roles in an organisation and are transferable into all businesses.

### **What will I learn?**

The award gives learners the opportunity to develop sector-specific knowledge and skills in a practical learning environment. The main focus is on the knowledge, understanding and skills required to research, plan, pitch and review an enterprise idea that includes:

- Development of key skills that will assist in planning an enterprise activity, including market research, planning, carrying out financial transactions, communication and problem solving.
- Features and characteristics of enterprises and entrepreneurs, and the internal and external factors that can affect the performance of an enterprise.
- Monitor and reflect on performance of an enterprise idea and own use of skills.

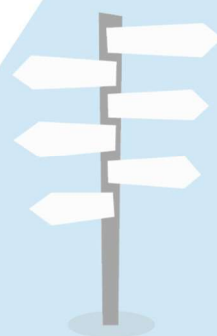
During the course you will also develop important skills that are useful in any industry, such as problem solving, decision making, innovation, project management, team working and communication. Visits from local enterprises assist the students with developing their skills needed for the qualification and give a true insight on how enterprises are run.

### **How will I be assessed?**

The qualification consists of three components that give learners the opportunity to develop broad knowledge and understanding of the enterprise sector. Components 1 and 2 are assessed through internal assessment. Students will look at features and factors that contribute to an enterprise's success. They will research, plan and forecast for their own enterprise. Internal assessments are assignment based. There is one external assessment, component 3, which provides the main synoptic assessment for the qualification. It builds directly on 1 and 2. Component 3 is promotion and finance for enterprise.

### **Where will this take me?**

When you have completed the qualification, you will have developed a practical understanding of the enterprise sector. After you have finished the course, you may want to go on to further study such as A levels, BTECs or a mixture of both, in areas such as Business, Enterprise and Entrepreneurship, Marketing, Computing or IT. Alternatively you may want to study a technical route designed to lead to work or take an apprenticeship or traineeship in the enterprise sector.





## **BTEC Tech Award in Music**

### **What will I learn?**

With a BTEC in Music, students gain valuable hands-on experience which can help take them into a career in the industry. A BTEC in Music is a great choice for students looking for a practical and creative qualification. The course aims to provide students with the relevant skills and knowledge that employers value, as well as the confidence to progress into a career in a creative industry.

### **What does the qualification cover?**

The music industry

- Learning about different types of organisations that make up the music industry
- Understanding about job roles in the music industry

Managing a music product

- Planning, developing and delivering a live concert/event or a recording or online product

Introducing music composition

- Creating a composition for a given brief eg a sequence from a film, a TV advert or a computer game

Introducing music performance

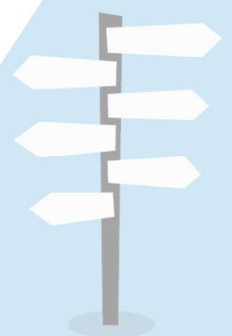
- Preparing a repertoire of music to practise, rehearse and perform for an audience

### **How will the course be assessed?**

The course is made up of tasks and assignments. Your teacher will mark these. For the assessment of unit one there is an exam which is sent away to be marked.

### **Do NOT consider this subject if you:**

This is a practical course which involves performing in a group and as a soloist. You need to be able to read basic music notation and you have to perform in front of the class and other audiences.





## **BTEC Tech Award in Travel and Tourism**

Welcome to the dynamic world of travel. There are millions of employees working in the travel and tourism sector around the world, and there are many exciting job opportunities to attract people with different skills and qualities.

A BTEC Tech Award is a practical, work-related course. You learn by completing projects and assignments that are based on realistic workplace situations, activities and demands.

A BTEC Tech Award is equivalent to one GCSE grade 9—4 or equivalent.

### **What will I Learn?**

You will learn all about what the travel and tourism industry involve including:

- Different holiday destinations in the UK, Europe and worldwide.
- The effects of worldwide travel
- Aspects of customer service

### **Progression Routes e.g. Further Education**

- Further education courses
- Jobs in the travel and tourism industry

### **Possible Careers**

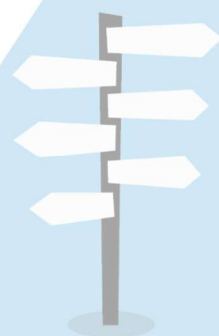
- Travel Agent
- Holiday Representative
- Cruise Ships
- Cabin Crew
- Airport Staff
- Hotelier

### **To be successful in this subject you need to:**

- Work efficiently to deadlines
- Be well organised
- Be prepared to learn new skills
- Be ambitious

### **Do NOT consider this subject if you:**

- Just think it's about going on trips/visits  
It is NOT!
- Are not people-friendly





# **Cambridge National Certificate in Child Development**

## **What is this course about?**

This qualification is for students aged 14-16 who wish to develop the knowledge, understanding and practical skills that could be used within the Childcare sector. It is designed with both practical and theoretical elements covering topics including reproduction, antenatal care, preparation for birth, postnatal care and conditions for development. Students also will develop an appreciation of the importance of creating the best conditions for a child to thrive including creating a child-friendly environment and the management and prevention of childhood illnesses. Understanding how babies and children develop will also form a large component of this course.

Many students will choose this option because they know they would like a career within the childcare sector. However, even if you have another career path in mind this course may still be beneficial as a way of developing the essential skills and confidence for future parenthood.

**The Level 2 Cambridge National qualification is equivalent to one GCSE grade 9-4.**

## **What will I learn?**

All students will study the following three mandatory topics:

- Health and well-being for child development
- Creating a safe environment and understanding the nutritional needs of children from birth to five years
- Understanding the development of a child from one to five years

You will be assessed using two coursework components (60%) and one external examination (40%).

## **Progression Routes**

In Year 12 there are a wide range of child care courses available ranging from Level 3 Diplomas to modern apprenticeships.

## **Possible Careers**

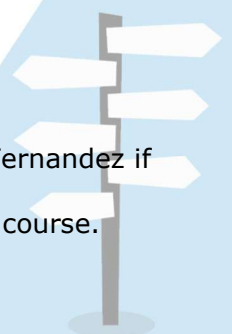
- Midwifery
- Nursery nursing
- Nursing
- Social work
- Teaching
- Radiography
- Sexual Health
- Youth support work

## **To be successful in this subject you need to:**

- Be well organised and good at keeping to deadlines
- Be prepared for lots of independent written work. This is not a soft option
- Have access to a child (currently under 3) who you can visit and complete activities with (see below)

## **Do NOT consider this course if you:**

- Dislike writing or completing large written pieces of work
- Are looking for an easy option. This is not it
- Have not got access to a young child to visit in Year 11 (come and see Mrs Fernandez if this is a concern)
- Think you will be given a virtual baby to take care of. That is not part of the course.







## **Cambridge National Certificate in Sports Studies**

Sports Studies is a practical, work related course which focuses on a range of sport-related topics including practical sports, outdoor and adventurous activities, leadership in sport and contemporary issues in sport.

### **What will I learn?**

Students must study two mandatory units with one additional unit being selected by the PE department and which is most suited to Montgomery students:

#### **Mandatory Units are:**

- R184: Contemporary Issues In Sport
- R185: Performance and Leadership in Sports Activities

#### **Optional Unit:**

- R187: Increasing Awareness of Outdoor and Adventurous Activities

### **How will I be assessed?**

40% of the course is assessed via a written examination, on the topic of Contemporary Issues In Sport. This is one hour and fifteen minutes in duration and will be sat at the end of Year 11. The two other units of study are coursework based and require students to consistently work hard during lessons to complete the learning objectives for each unit in order to meet the criteria set, making up the remaining 60% of the course.

### **What homework will I have?**

Homework is limited due to all coursework having to be completed in the presence of staff within the guided learning hours allocated for each unit of work. However, when studying R184: Contemporary Issues in Sport students will obviously be expected to revise thoroughly and create revision resources in their own time in preparation for the written exam. When studying the coursework-based units of work, students will be expected to stay behind after school in interventions if they fall behind in any given task.

### **Progression routes and possible careers:**

Sports Studies is for those who wish to continue their studies in PE and sport in further education including A level and BTEC Sport courses. Professions available to those interested in Sports Studies:

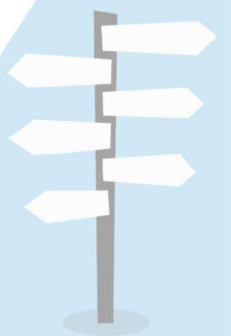
- Teacher
- Sports Psychologist
- Sports coaching
- Sports official
- Sports dietician
- Sports management
- Physiotherapist and sports injury

### **Any Special Requirements?**

Students must show a keen interest in sports and be actively involved in sports teams at Montgomery and in the local community. Those students who have had kit and behavioural issues within their PE lessons may be declined from this course.

**The PE department will ultimately have the final decision on whether you study GCSE PE or Cambridge National Sports Studies based on your practical and academic ability.**







## Points to Remember

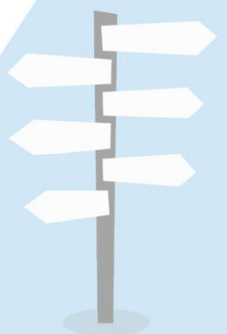
- ◆ To be able to gain the English Baccalaureate you must choose either Geography or History or both **and** French alongside your core, compulsory subjects of Mathematics, English and Science.
- ◆ Choose subjects you like and think you can do well in
  - ◆ Choose subjects for a possible career interest but try to avoid choosing three similar options—a broad scope will give you wider choice for the future

... and MOST importantly.....

these are YOUR choices and should be related to YOUR potential future career!

**DO NOT BE INFLUENCED BY THE CHOICES OF YOUR FRIENDS**

**Even if you chose the same options, you would not necessarily be in the same class.**





**Your Ideas**

**Subjects I achieve well in**

**Subjects I feel less confident in**

**Subjects I enjoy**

**Subjects I do not enjoy as much**

**Subjects I might need for my possible career**

**Initial thoughts:**

**Option choice 1:**

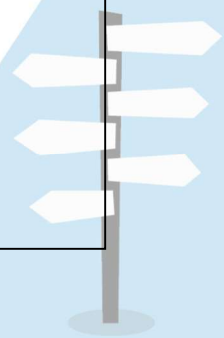
**Reserve:**

**Option choice 2:**

**Reserve:**

**Option choice 3:**

**Reserve:**





**Space for notes / options discussion**

**Local Post-16 providers**

**Blackpool Sixth Form College – <https://www.blackpoolsixth.ac.uk/>**

**Blackpool and the Fylde College – <https://www.blackpool.ac.uk/>**

**St Mary's Sixth Form College – <https://www.st-mary.blackpool.sch.uk/index.php/sixth-form/sixth-form-home>**

**Myerscough College – <https://www.myerscough.ac.uk/>**

**Who offers the further education courses you are interested in?**

**What qualifications do you need to get on to the course?**

**If you require any further advice regarding the options process please contact either Mrs Montgomery, Mrs Coultas or Mr Palfrey at school.**

**Tel: 01253 356271**

**Email: [c.montgomery@montgomery.fcat.org.uk](mailto:c.montgomery@montgomery.fcat.org.uk)**

**[l.coultas@montgomery.fcat.org.uk](mailto:l.coultas@montgomery.fcat.org.uk)**

**[p.palfrey@montgomery.fcat.org.uk](mailto:p.palfrey@montgomery.fcat.org.uk)**

